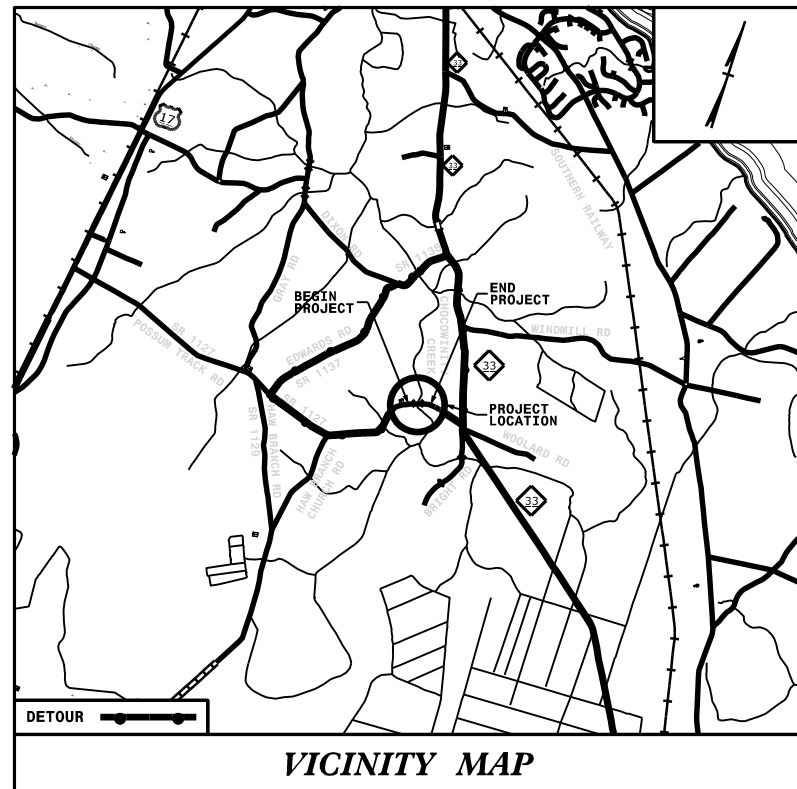


09/08/19

See Sheet 1A For Index of Sheets

23-SEP-2019 10:48
 G:\4201720\X-X_SMU-Build_Grant\BR-0110_D2_Beaufort\72\Hydraulics\CADD\PSH\BR-0110_Hyd_tsh_PERMITS.dgn
 jmcneulty AT KCA0787

TIP PROJECT: BR-0110



VICINITY MAP

90% PLANS

STATE OF NORTH CAROLINA
 DIVISION OF HIGHWAYS
BEAUFORT COUNTY

**LOCATION: BRIDGE 060072 ON SR 1127 (POSSUM TRACK RD)
 OVER CHOCOWINITY CREEK**

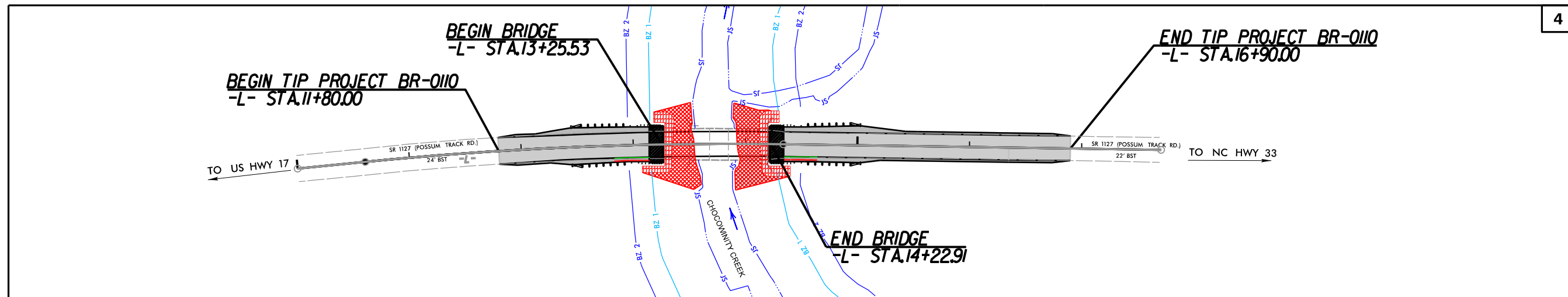
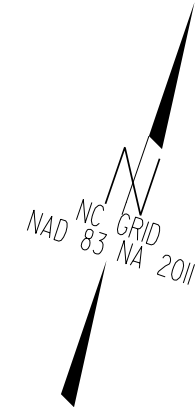
TYPE OF WORK: GRADING, DRAINAGE, PAVING AND STRUCTURE



STATE	STATE PROJECT REFERENCE NO.	SHEET NO.	TOTAL SHEETS
N.C.	BR-0110	1	
STATE PROJ. NO.	F.A. PROJ. NO.	DESCRIPTION	
48819.1.1	N/A	PE	
48819.2.1	N/A	RW, UTILITIES	
48819.3.1	N/A	CONSTRUCTION	

**BUFFER IMPACTS
 PERMIT
 09/23/2019**

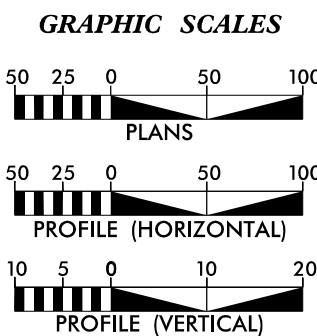
**BUFFER DRAWING
 SHEET 1 OF 5**



THIS IS NOT A CONTROL OF ACCESS PROJECT.

PRELIMINARY PLANS DOCUMENT NOT CONSIDERED FINAL
 DO NOT USE FOR CONSTRUCTION UNLESS ALL SIGNATURES COMPLETED

CONTRACT:



DESIGN DATA
 ADT 2016 = 610
 V = 55 MPH
 T = 6%*
 (*TTST 3% + DUALS 3%)
 FUNC CLASS = LOCAL RURAL
 SUB-REGIONAL TIER

PROJECT LENGTH

LENGTH ROADWAY TIP PROJECT BR-0110	=	0.078 MILES
LENGTH STRUCTURES TIP PROJECT BR-0110	=	0.018 MILES
TOTAL LENGTH TIP PROJECT BR-0110	=	0.096 MILES

NCDOT CONTACT: DAVID STUTTS, PE
 SMU PROJECT MANAGER

Prepared In the Office of:
KCA
 KISINGER CAMPO & ASSOCIATES
 NC FIRM LICENSE No: C-1506
 301 Fayetteville St., Suite 1500
 Raleigh, NC 27601
 (919) 882-7839

2018 STANDARD SPECIFICATIONS

RIGHT OF WAY DATE: 8/21/2019
LETTING DATE: 02/12/2020

JONATHAN LANGSTON, PE
 PROJECT ENGINEER

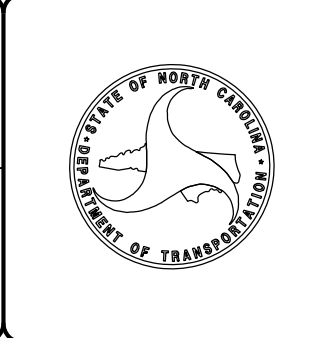
JASON DEBONE
 PROJECT DESIGN ENGINEER

HYDRAULICS ENGINEER

 P.E.

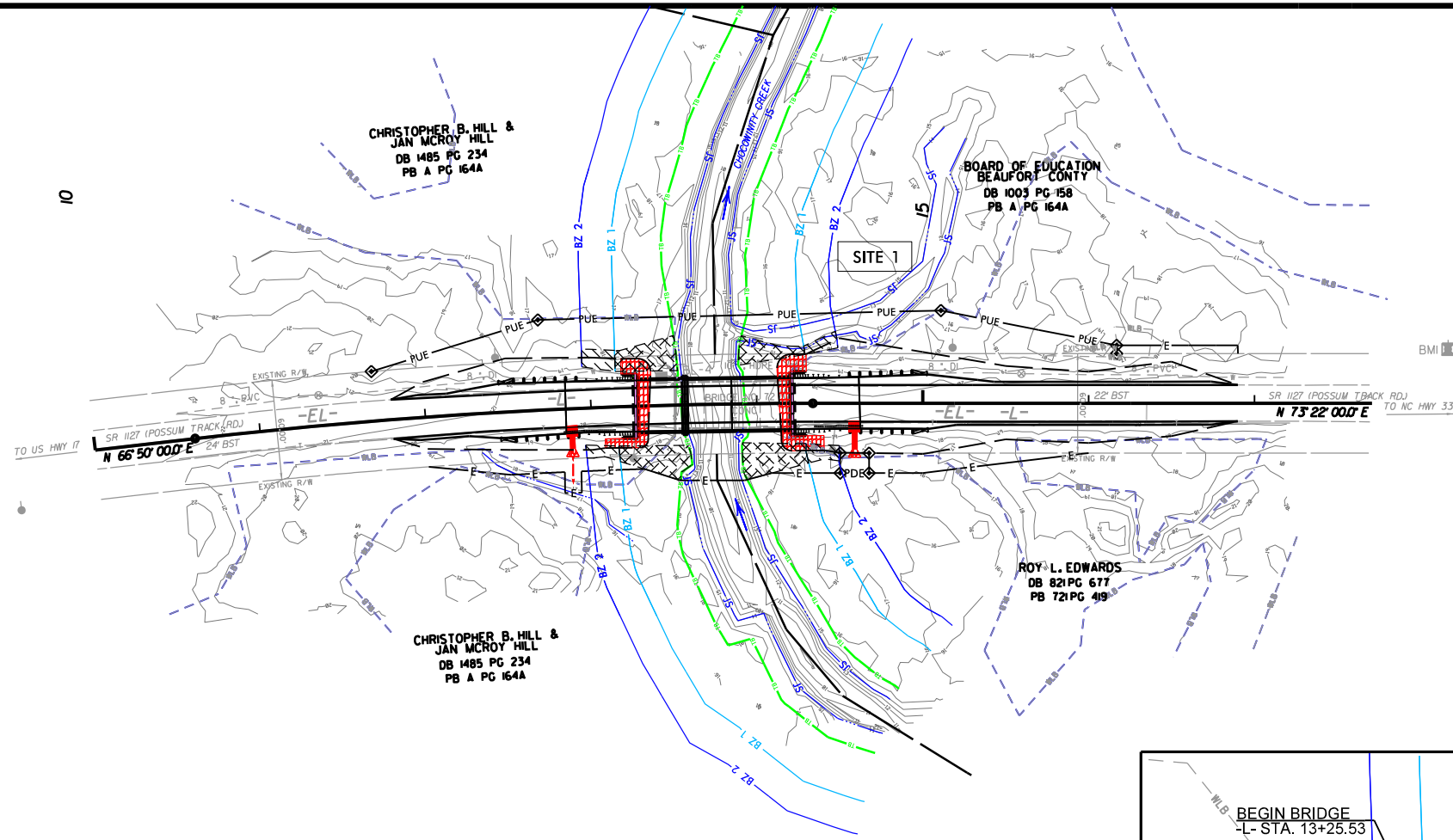
ROADWAY DESIGN ENGINEER

 P.E.



8/17/99

-L-
 PI Sta 12+47.43
 $\Delta = 6' 32'' 00.0'$ (RT)
 $D = 1' 45'' 00.0'$
 $L = 373.33'$
 $T = 186.87'$
 $R = 3,274.04'$
 $SE = 4\%$
 $RO = 96'$



ALLOWABLE IMPACTS ZONE 1
 ALLOWABLE IMPACTS ZONE 2

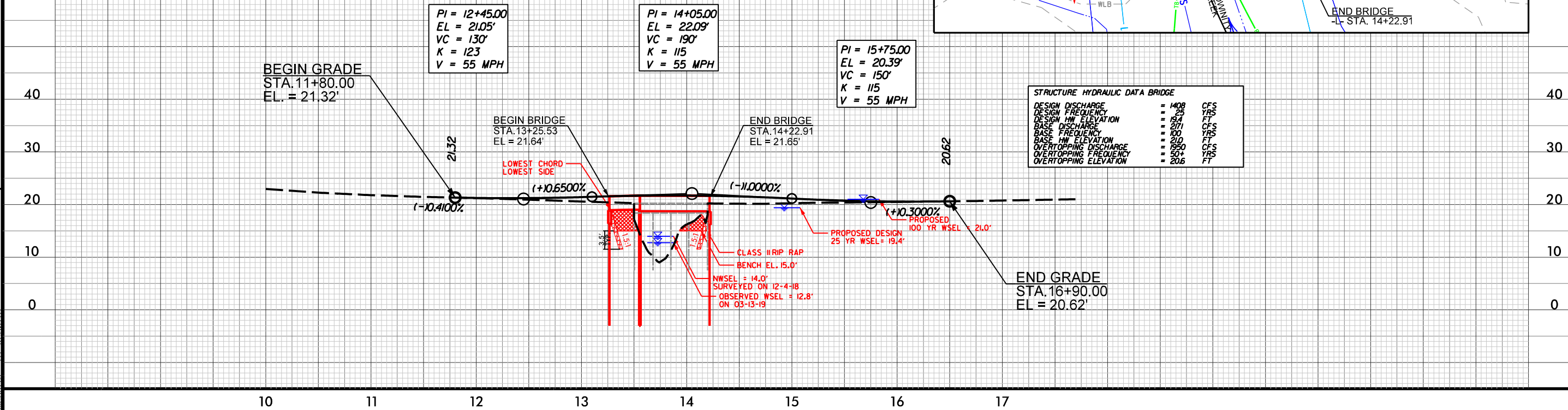
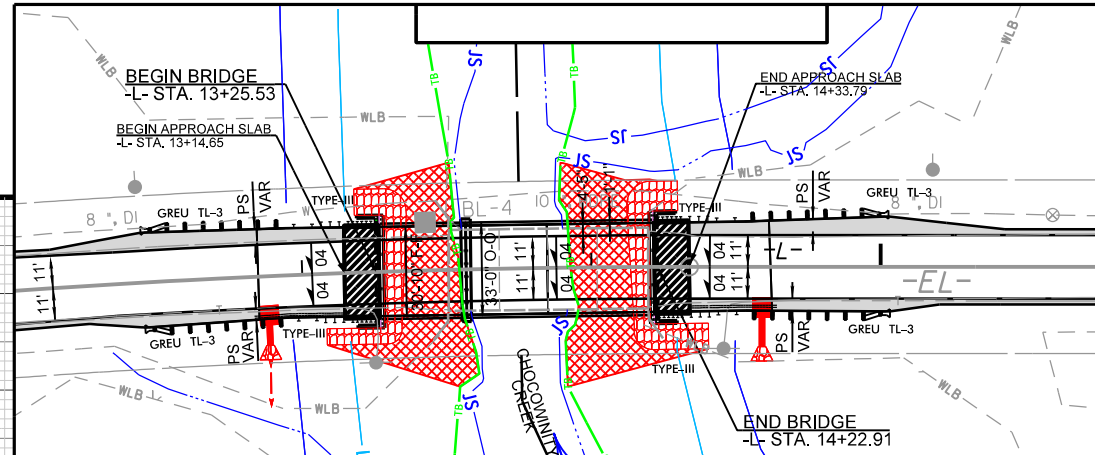
PROJECT REFERENCE NO. BR-0110	SHEET NO. 4
R/W SHEET NO.	
ROADWAY DESIGN ENGINEER	HYDRAULICS ENGINEER
PRELIMINARY PLANS DO NOT USE FOR CONSTRUCTION	
DOCUMENT NOT CONSIDERED FINAL UNLESS ALL SIGNATURES COMPLETED	
PREPARED IN THE OFFICE OF: KCA KISINGER CAMPO & ASSOCIATES	NC FIRM LICENSE No: C-1500 301 Fayetteville St., Suite 1500 Raleigh, NC 27601 (919) 882-7839

BUFFER DRAWING SHEET 2 OF 5

REVISIONS

-L- SR 1127 (OVER CHOCOWINITY CREEK)

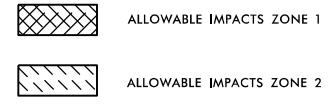
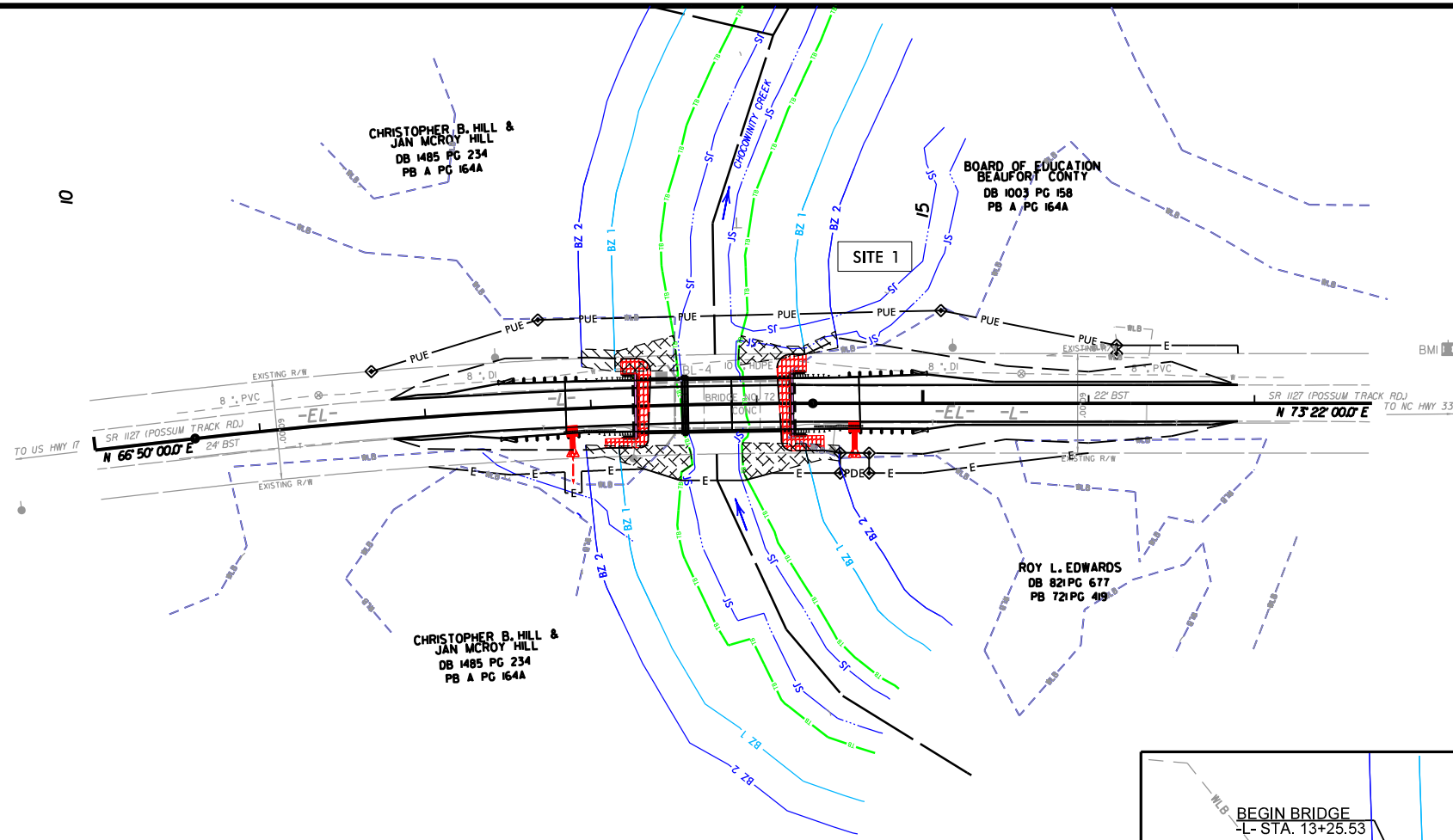
BMI
 -BL- STA.14+04.00, 18' LT
 -L- STA.17+70.84, 32.7' LT
 EL = 20.08
 BRIDGE SPIKE SET IN POWER POLE



23-SEP-2019 10:48
 G:\20172018\XX-SMU-Build Grant\BR-0110.D2.Beau\pct.72\Hydraulics\CADD\PSH\BR-0110_Hyd_PSH_permits_CONTOURS.dgn

8/17/99

-L-
 PI Sta 12+47.43
 $\Delta = 6' 32'' 00.0''$ (RT)
 $D = 1' 45'' 00.0''$
 $L = 373.33'$
 $T = 186.87'$
 $R = 3,274.04'$
 $SE = 4\%$
 $RO = 96'$



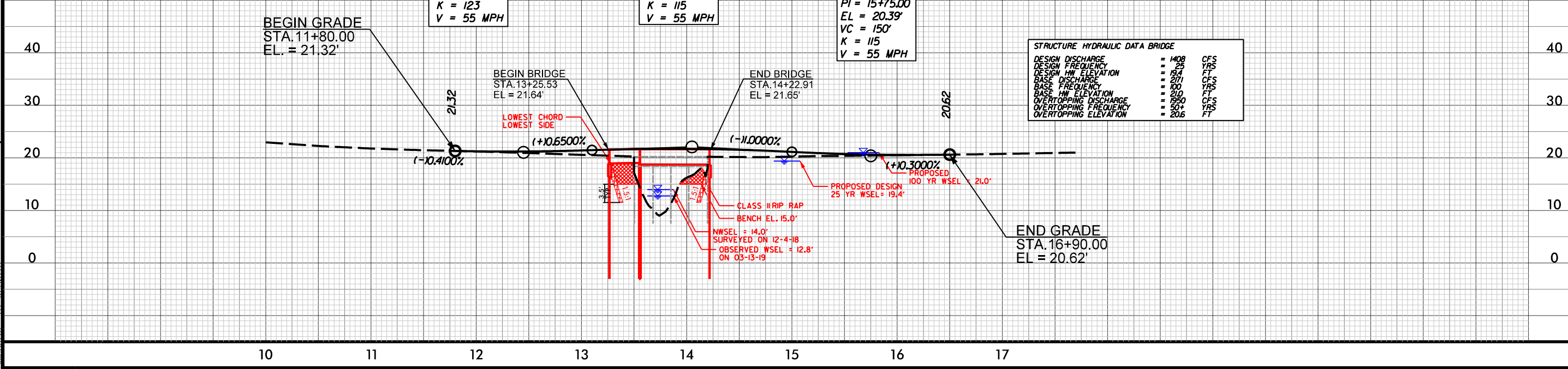
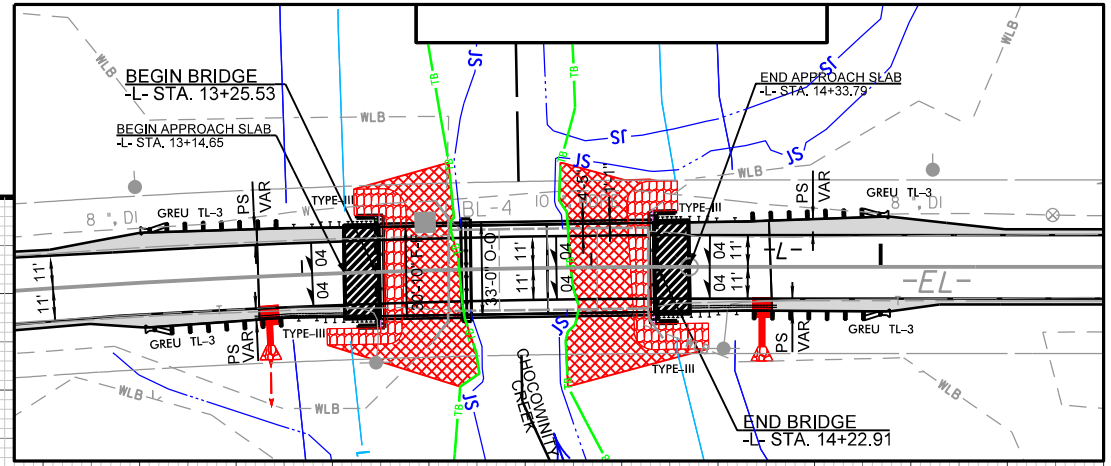
PROJECT REFERENCE NO. BR-0110	SHEET NO. 4
R/W SHEET NO.	
ROADWAY DESIGN ENGINEER	HYDRAULICS ENGINEER
PRELIMINARY PLANS DO NOT USE FOR CONSTRUCTION	
DOCUMENT NOT CONSIDERED FINAL UNLESS ALL SIGNATURES COMPLETED	
PREPARED IN THE OFFICE OF: KCA KISINGER CAMPO & ASSOCIATES	NC FIRM LICENSE No: C-1500 301 Fayetteville St., Suite 1500 Raleigh, NC 27601 (919) 882-7839

BUFFER DRAWING
SHEET 3 OF 5

REVISIONS

-L- SR 1127 (OVER CHOCOWINITY CREEK)

BMI
 -BL- STA.14+04.00, 18' LT
 -L- STA.17+70.84, 32.7' LT
 EL = 20.08
 BRIDGE SPIKE SET IN POWER POLE



23-SEP-2019 10:48
 G:\20172018\XX-SMU-Build Grant\BR-0110.D2.Beau\pct.72\Hydraulics\CADD\PSH\BR-0110_Hyd_PSH_permits.dgn
 KCA002

RIPARIAN BUFFER IMPACTS SUMMARY

Site No.	Station (From/To)	Structure Size / Type	IMPACTS									BUFFER REPLACEMENT	
			TYPE			ALLOWABLE			MITIGABLE			ZONE 1 (ft ²)	ZONE 2 (ft ²)
			ROAD CROSSING	BRIDGE	PARALLEL IMPACT	ZONE 1 (ft ²)	ZONE 2 (ft ²)	TOTAL (ft ²)	ZONE 1 (ft ²)	ZONE 2 (ft ²)	TOTAL (ft ²)		
1	12+94 to 14+50	95' Prop Bridge		X		2341	730	3071					
TOTALS*:						2341	730	3071	0	0	0	0	0

NOTES:

NC DEPARTMENT OF TRANSPORTATION
 DIVISION OF HIGHWAYS
 09/09/2019
 Beaufort
 BR-0110
 48819.1.1
 SHEET 4 OF 5

Revised 2018 Feb

WETLANDS IN BUFFER IMPACTS SUMMARY

SITE NO.	STATION (FROM/TO)		WETLANDS IN BUFFERS	
			ZONE 1 (ft ²)	ZONE 2 (ft ²)
1	12+94 to 14+50		1429	243
TOTAL:			1429	243

NC DEPARTMENT OF TRANSPORTATION
 DIVISION OF HIGHWAYS
 995
 Beaufort
 BR-0110
 48819.1.1

SHEET 5 OF 5

Revised 2018 Feb

Rev. Jan 2009